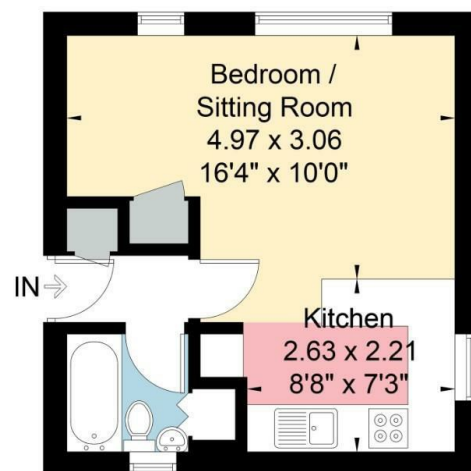


11 Weymouth Court, Weymouth Street, Bath, BA1 6AG
Approximate Gross Internal Area = 26.2 sq m / 282 sq ft



Ground Floor

These plans are prepared in accordance with the guidelines as set out by the RICS Code of Measuring Practice. Whilst every attempt has been made to ensure accuracy, all measurements should be treated as approximate and as such are for illustrative purposes only. Not to Scale. Photography (Interior Video Tours) (Floor Plans) (Energy Performance Certificates) (Design) (Print) (www.roomgroup.com) © Room - Creative Property Marketing Ltd 2022

VIEWING AND OFFER PROCEDURE: If you wish to view this property, please contact our office on the number provided. All offers on this property should be made through this office. In order to fulfill our responsibilities to the seller, when offering on this property, you will be asked a series of questions about how you intend to fund the purchase and whether or not your offer is dependent on the sale of another property. This information provided by you, along with the amount of your offer, will then be forwarded onto the seller for consideration.

MONEY LAUNDERING REGULATIONS - Intending purchasers will be asked to produce identification documentation at a later stage and we would ask for your cooperation with this in order that there will be no delay in agreeing the sale.

DISCLAIMER: All appliances, apparatus, equipment, fixtures and fittings listed in these details are only 'as seen' and have not been tested by Zest, nor have we sought certification of warranty or service, unless otherwise stated. It is in the buyers interests to check the working condition of any appliances. Any floor plans and or measurements provided are given as a general guide to room layout and design only. They are supplied for guidance only - they are not exact and must not be relied upon for any purpose, and therefore must be considered incorrect. As a potential buyer you are advised to recheck the measurements before committing to any expense. These details are offered on the understanding that all negotiations are to be made through this company. Neither these particulars, nor verbal representations, form part of any offer or contract, and their accuracy cannot be guaranteed. Zest has not sought to verify the legal title of the property and the buyer(s) must obtain verification from their solicitor.

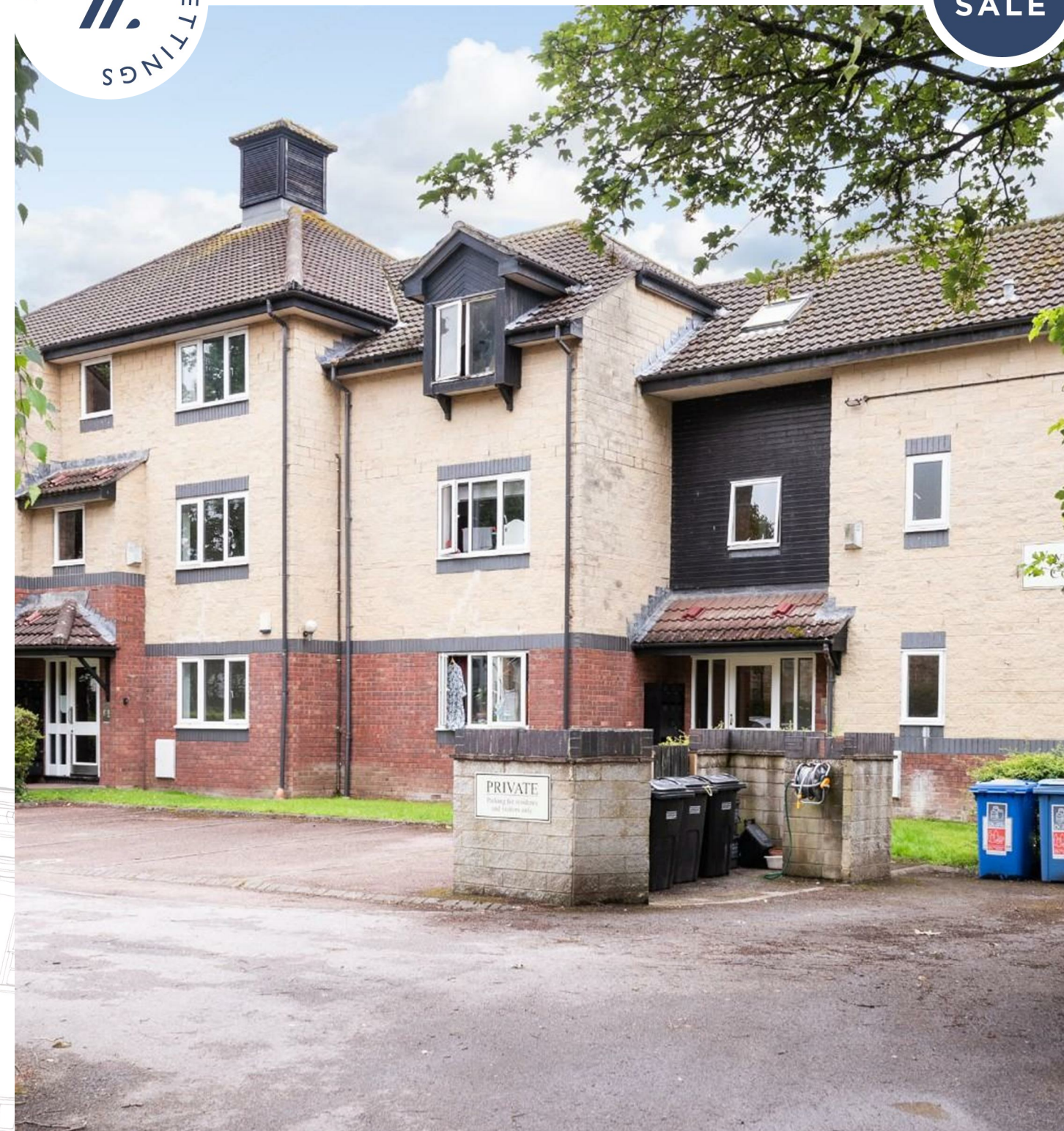
ZEST ESTATE AGENTS

1A MILE END
LONDON ROAD
BATH
BA1 6PT

T: 01225 48 10 10
E: HAPPYTOHELP@ZESTLOVESPROPERTY.COM



01225 48 10 10 • happytohelp@zestlovesproperty.com • www.zestlovesproperty.com



**WEYMOUTH COURT, BATH
WEYMOUTH STREET BA1 6AG**

**GUIDE PRICE
£135,000**

1 BEDROOM STUDIO

- Bedroom/living room, kitchen, bathroom
- Communal garden with river frontage
- Allocated off road parking space, cash buyers only
- EPC D, Council tax A, Leasehold



DESCRIPTION

11 Weymouth Court is a quietly positioned ground floor studio apartment. The studio offers a living/bedroom, kitchen and a bathroom. Weymouth court has a lovely outlook over the river Avon within a level walk of the city centre. Allocated off road parking space, visitors parking. Beautiful communal grounds with river frontage to the rear. No onward chain.

LOCATION

Weymouth Court, only a short walk to Larkhall, offering frequent bus services into the City centre which is an approximate 20 minutes level walk. The amenities in Larkhall village include a butchers, deli, Co-op, three public houses, pet shop, takeaways, coffee shop, gift shop, pottery painting, greengrocer, Post Office/Newsagent, hardware store,

hairdresser, and the very handsome St Saviours Church. Larkhall further benefits from the charming Rondo Theatre, with many stage productions on offer throughout the year. There is also the wonderful Alice Park, complete with coffee shop area just a 5 minute walk away. Level walk from Kensington Place into Walcot street, city center, bus station and train station.

TENURE

999yr lease, commenced in 1987
Share of freehold - Weymouth Court Management Company
Managed by West of England Management Company
Management charge £850pa
Subject to change

